

TOWARDS
BETTER LIFE

*ESCALATOR
MOVING WALK*

TOWARDS
SUZHOU TOWARDS ELEVATOR CO.,LTD

Add: West Nanhuan Road,Port Development Part,Taicang,Jiangsu,China
Tel: +86 512 8166 2155 Email: info@towardselevator.com
Http: www.towardselevator.com

TOWARDS





TOWARDS

When you first heard about "TOWARDS", it might be only one word. However it will become a new attitude to life from now on. Basing on Italian technology , international advanced management , manufacturing and service platform , TOWARDS set up a full chain , from product R&D , manufacture , sales , installation , maintenance and modernization for elevator & escalator .

"Towards Elevator, Towards Better Life" is our mission . This will be realized not only by the workers who are manufacturing the elevators or engineers who are designing it, but also the passengers who are taking a ride of it.

Technology-oriented objectives is what we are insisting on our elevators and escalators. Safety, protection, comfort are what we are considering. Parts testing before usgae is what we are doing.

Towards Elevator is becoming one of the leading elevator & escalator suppliers all around the world. Welcome to join us!

Towards Elevator, Towards Better Life

WHY CHOOSE US

10Y

Focusing on elevator market for years

Focusing on elevator market for years



Abundant interior cabin designs

Abundant interior cabin designs to reach your unique demands



Full experience in customized elevator design and manufacture

Full experience in customized elevator design and manufacture to provide you feasible solutions



Professional sales team

Professional sales team can give you 24 hours time to time reply, from the fist inquiry till the last maintenance.

PERFECT BLEND OF HUMAN TECHNOLOGY AND INNOVATIVE DESIGN

TOWARDS escalators possess the understanding of lifts for humans' enjoying pursuit, combine the unique human technology and ingenious innovative design and bring each customer with the quick, convenient, joyful and comfortable enjoyment.

Run efficiently, create with precision work and wisdom and let the city operation in order

High-precision traction machine: provide escalators for a strong delivery power.

Variable frequency drive control: remarkable energy-saving effect, increase the service life of the equipment and reduce the operation cost.

Step road guide rail design: fixed the steps on the step guiderail, control steps' running direction and improve operating efficiency.

Super load and resistant to corrosion: use firm parts to flexibly satisfy commercial delivery needs.



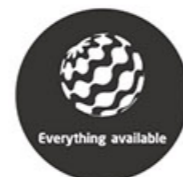
Well considered in every aspect, especially in safety protection, everything is perfect

Unique brake device: realize the free adjustment of brake torque during the running up and down and ensure the steady and safety.

Running direction displayer: massive dot matrix can display the running direction to increase security .

Fault display: when the fault occurs, the fault code will be displayed on the fault screen, which is good for judging the fault position and improves the efficiency of maintenance.

Skirt panel lighting device: it keeps the beams of light elegant and highlights the visibility of escalator in the whole building to make customer more comfortable and safe.



REALIZE THE GREEN OPERATION WITH SAFETY, ENERGY-SAVING AND COMFORT



TOWARDS moving walkways are designed with novel, fashionable and creative streamline appearance and appear in every corner of the city with the elegant posture. The super passenger capacity, advanced manufacturing technology and comfortable ride experience can achieve the operation with the safety, energy-saving and environmental protection and improve the reasonable and orderly development of construction of urban space.

The excellent system can achieve the delivery of a large number of passengers and cargos

Microcomputer control panel: quick operation speed, powerful internal function and high stability.

High precision displacement detection technology: it can achieve the leveling accuracy with nearly zero-to-zero and makes passengers in and out as easily as on smooth ground.

Advanced handrail drive: accurately combining the friction wheel drive with V-belt drive, this design not only improves the driving force, but also prevents handrail from surface damage.

The anti-skid slot on the surface of small pedals: let customers experience the safety and comfort.

The perfect configuration can greatly improve the operational efficiency

The big radius and equal arc rotation handrail guide: the use of handrail chain can effectively reduce the friction and prolong the service life of handrail.

Ultra-quiet traction machine: it can effectively prevent the vibration. The landing plate possess the design of special mute shock-absorbing and the tensioner can effectively prevent the noise better.

PLC automatic oil lubricating control system: fulfill the ideal automatic lubricating for transmission chains in the process of moving walkways running and prolong the service life of transmission mechanism.



COMMERCIAL MOVING WALKWAYS



As easily as on smooth ground, convenient transportation
Provide crowded places with the comfortable and smooth passenger flow service

TOWARDS commercial moving walkways adopt a number of world advanced energy-saving technology, which are designed with the modern innovation and produced in strict conformance with the safety standards to solve the frequent passenger flow in public places such as shopping malls, shopping centers and airports. The commercial moving walkways are developed for long distance delivery of people and goods to bring people with convenient trips as well as rapid and joyful feelings.

COMMERCIAL ESCALATORS

The unique masterpiece with perfect will bring the ride into the simple and comfortable state

Adhering to the principle of "humanity-oriented production and manufacturing", TOWARDS Commercial Escalators always take full account of escalator safety, aesthetics, performance, and various requirements of customers, bring customers with steady and safe experiences, enable customers to enjoy the comfort and relaxation, and add luster to the magnificent business environment.



SAFETY DEVICE

Standard safety device	
1 Lack of phase, error phase protection	8 Broken step chain protection
2 Motor over-load protection	9 Over-speed protection
3 Electrical appliance loop protection	10 Direction reversal protection
4 Handrail entrance protection	11 Security line
5 Comb plate safety device	12 Emergency stop button
6 Step sagging protection device	13 Skirt panel protection
7 Broken drive-chain safety device	14 Brake protection

Standard safety device	
15 Safety inspection switch	19 Skirt panel brush
16 Step illumination	20 Braking distance inspection
17 Landing plate contact	21 Step missing detection
18 Handrail speed monitor	

Optional safety device	
22 Alarm bell starting device	25 Auxiliary brake (it should be allocated with the emergency brake when 6m<h)
23 Handrail broken protection	26 Oil-water separator(outdoor escalator)
24 Lower machine room water level detection (outdoor escalator)	





Handrail color



Black



Gray



Light brown



Red



Shallow bluish green



Blue

Baseboard color

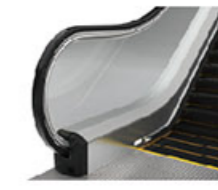
1



2



3

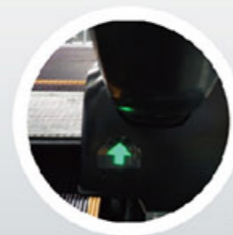


- 1.Transparent color
- 2.Bronze
- 3.Gray

PERFECT FUNCTIONS

1.Operation direction indicator:

The operation direction and prohibition display identifiers are placed on the entrance of handrail to ensure passengers' safety and freedom through the obvious operation and prohibition identifiers.



1

2.Entrance of handrail:

The unique and fashionable entrance and exit streamline design of handrail gives escalators more spirituality and affinity and careful observing for users. It fully shows the flexible, rounded and smooth sense of beauty and surrounding buildings' elegance and nobility.



2



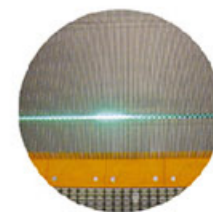
3



4



5



6

3.Frequency auto restart: The sensor is located near the floor panel to detect the adjacent passengers. It starts automatically from fast to slow and stops automatically when all the passengers leave.

4.Internal step chains of roller: The roller is internally placed in the specially designed step chains of roller to effectively reduce the noise during the running of the drive and make the operation more steady and quiet.

5.Skirt panel brush: It is installed on both sides of skirt panel, a little bit higher than step. Brush can prevent passengers' shoes from touching the skirt panel and keep the foreign matters from being taken into steps.

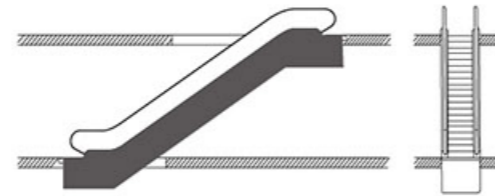
6.Step alarm light: The green fluorescent lights are installed under the upper and lower step, When the joint steps are operated separately, the green fluorescent lights will appear from the gaps between steps to help passengers identify the flat step in and out to ensure the safety.

LAYOUT PLAN

Logical positioning systematic layout

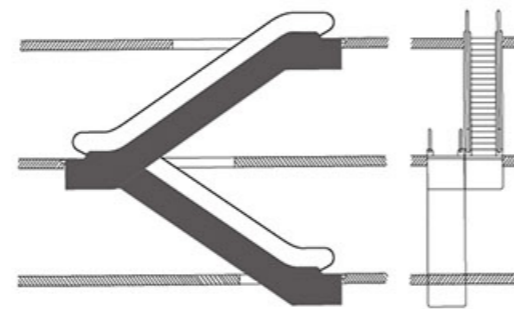
Single unit

The single unit is used to link two levels. It is suitable for buildings with passenger traffic flowing mainly in one direction. Flexible adjustment to traffic flow (e.g. up in the morning and down in the evening) is possible.



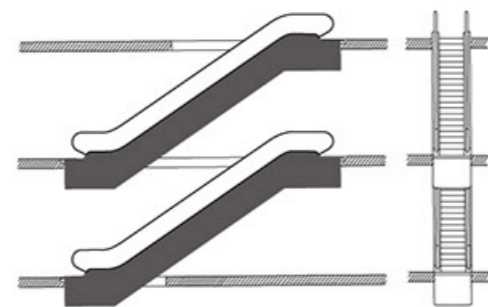
Continuous arrangement (one-way traffic)

This arrangement is used mainly in smaller department stores to link three sales levels. It requires more space than the interrupted arrangement.



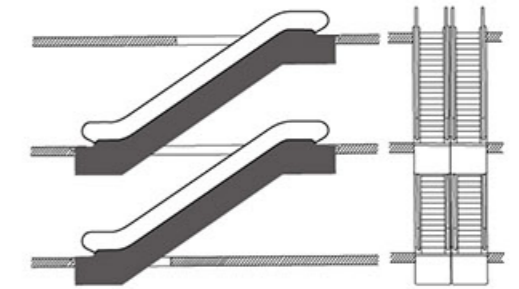
Interrupted arrangement (one-way traffic)

This arrangement is somewhat inconvenient for users, but advantageous for department store owners, since the short detour to the next unit and the spatial separation between up and down travel is ideal for leading customers past strategically placed advertising displays.



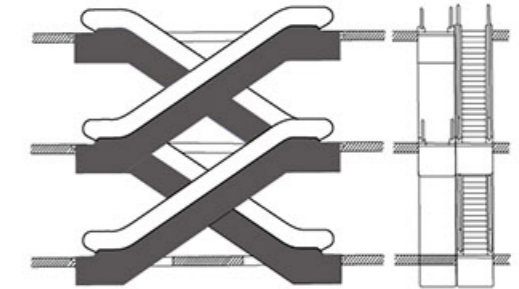
Parallel, interrupted arrangement (two-way traffic)

This arrangement is used mainly in department stores and public transport buildings with a heavy traffic volume. When there are three or more escalators, it should be possible to reverse the traveling direction according to the traffic flow. This arrangement is economical, since no inner lateral claddings are required.

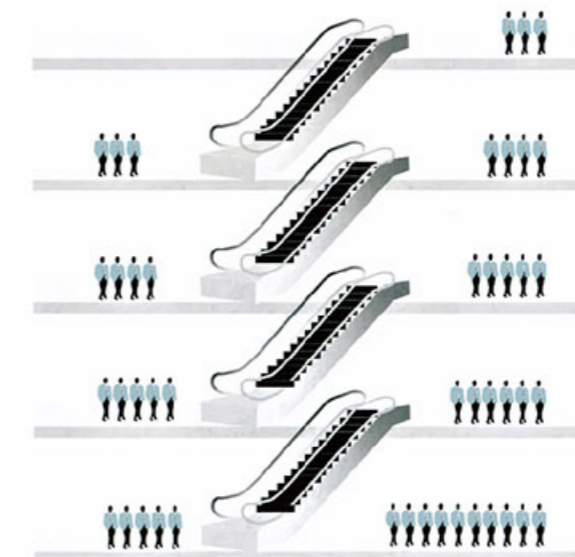


Crisscross, continuous arrangement (two-way traffic)

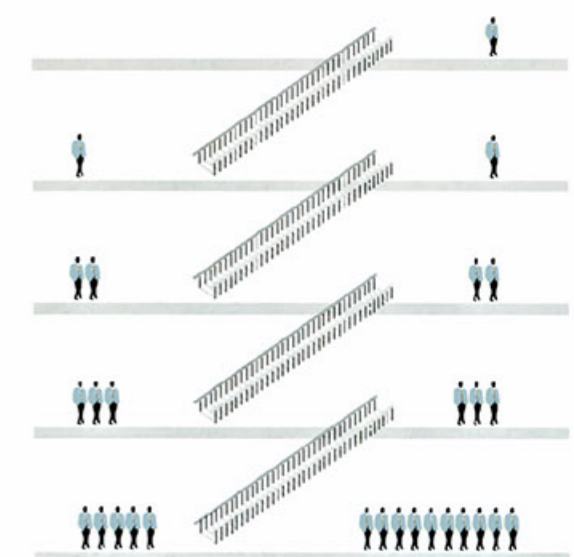
This arrangement is used mainly in major department stores, public buildings and public transport buildings where transport times between several levels should be kept to a minimum.



Escalators

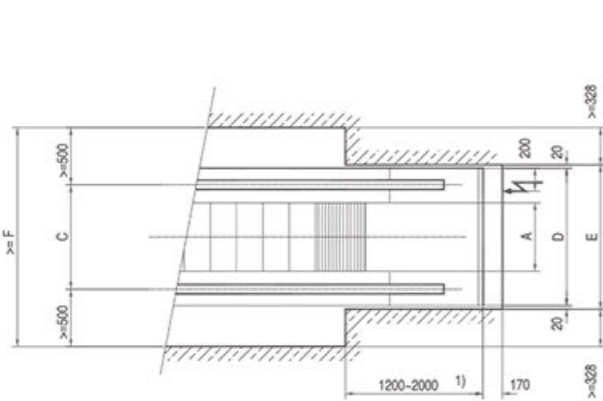
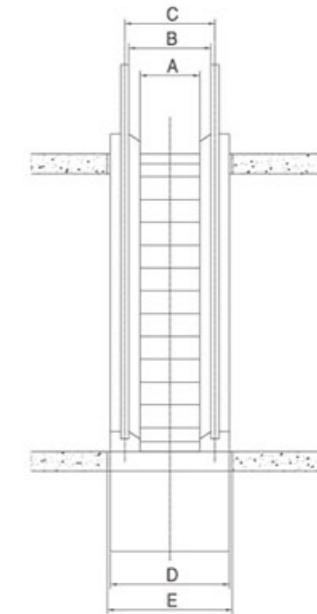
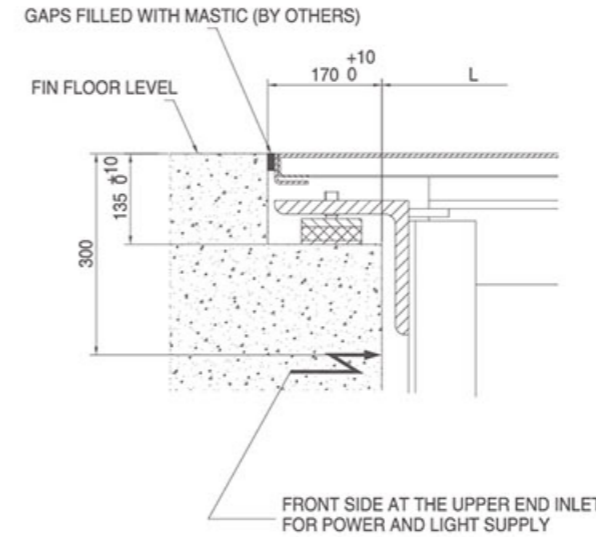
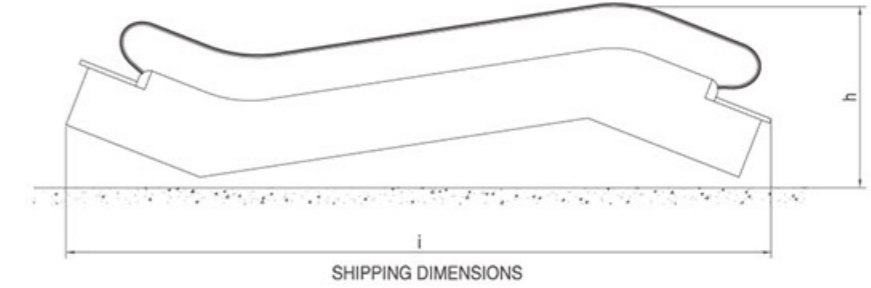
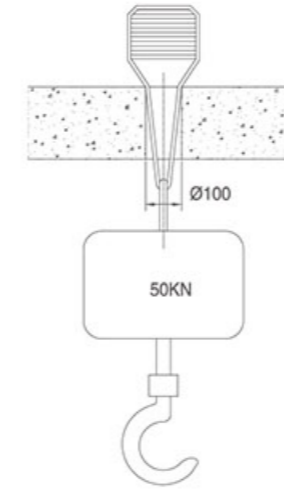
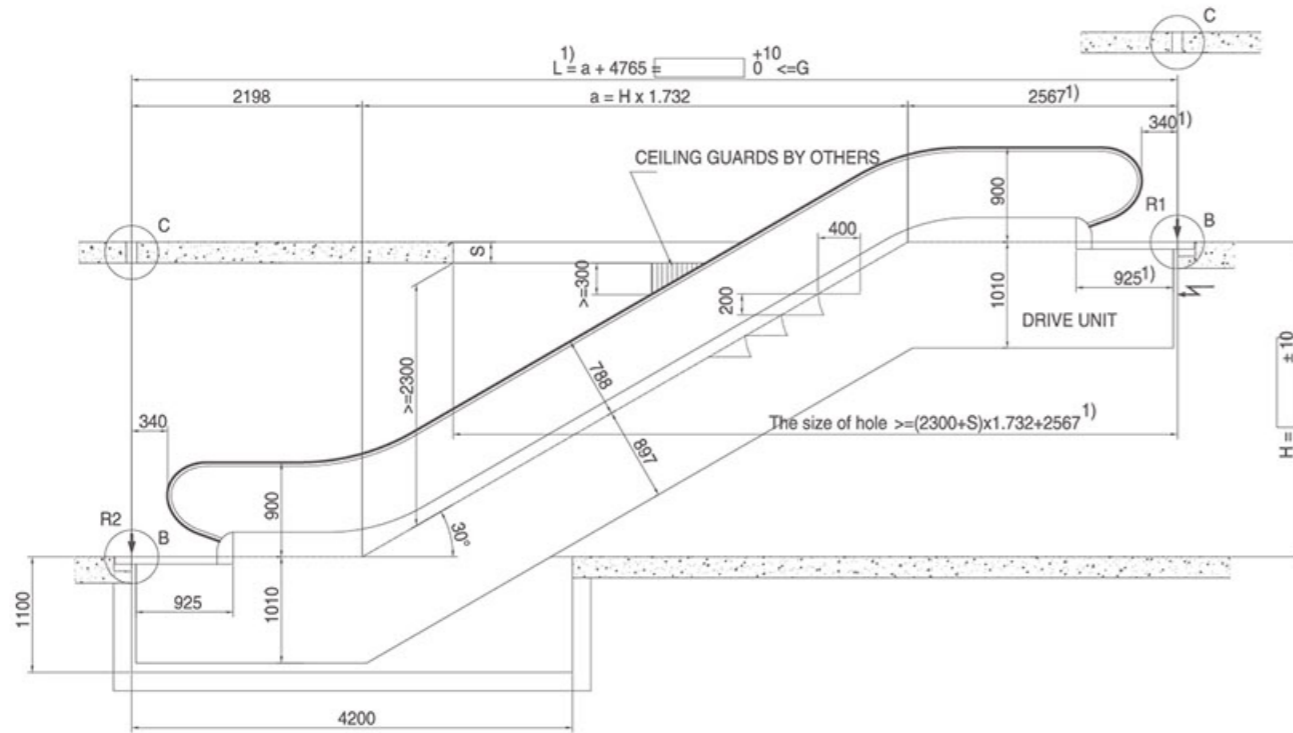


Ordinary staircase

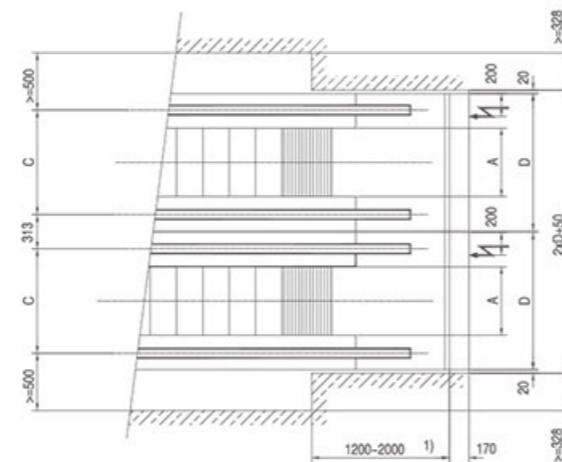




HS200-30K COMMERCIAL ESCALATOR CONSTRUCTION LAYOUT DRAWING



SINGLE



PARALLEL

Type	Rise	Weight	Support Loads		Power kw	Transport size	
			R1	R2		H	I
30-60K 3240 man/hour	H	KN	KN	KN	V=0.5m/s	H	I
	3000	57	49	45	5.5	2171	11213
	3500	61	53	48	5.5	2216	12200
	4000	64	56	52	5.5	2252	13190
	4500	67	59	55	5.5	2282	14181
	5000	71	63	58	5.5	2307	15173
30-80K 4800 man/hour	5500	74	66	61	5.5	2328	16166
	6000	77	69	64	5.5	2346	17159
	3000	59	56	51	5.5	2064	10823
	3500	63	60	55	5.5	2100	11813
	4000	66	63	59	5.5	2128	12804
	4500	70	67	63	5.5	2151	13796
30-100K 6000 man/hour	5000	73	71	66	8	2170	14789
	5500	77	75	70	8	2186	15784
	6000	80	79	74	8	2200	16779
	3000	62	63	59	5.5	2064	10823
	3500	66	68	63	8	2100	11813
	4000	70	72	67	8	2128	12804
4500	73	77	72	8	2151	13796	
5000	77	82	76	11	2170	14789	
5500	81	86	81	11	2186	15784	
6000	85	91	85	11	2200	16779	

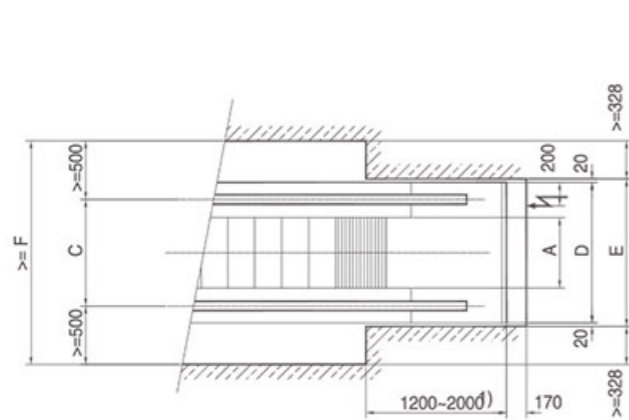
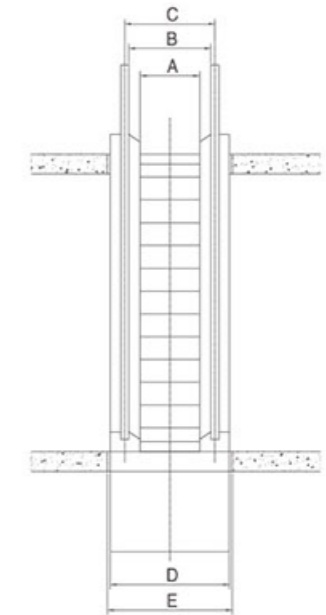
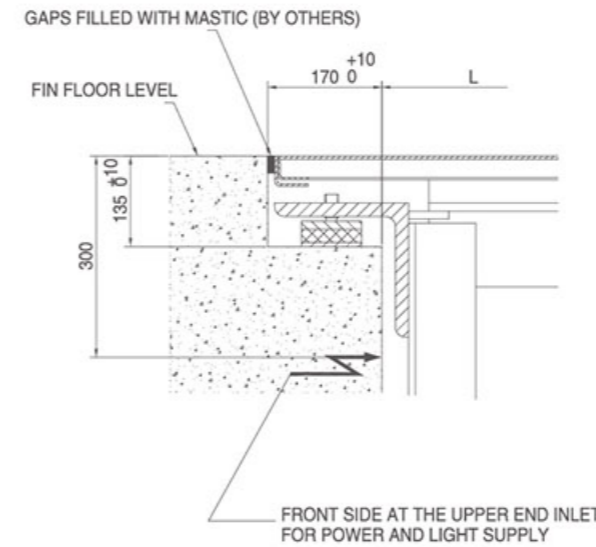
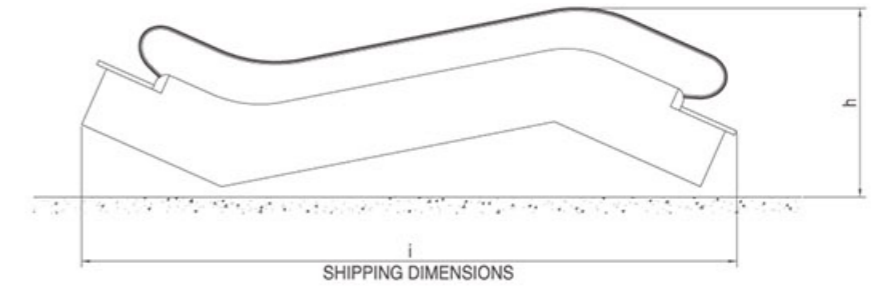
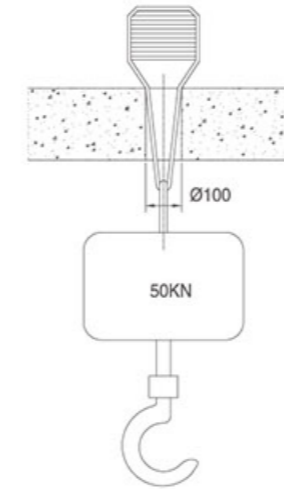
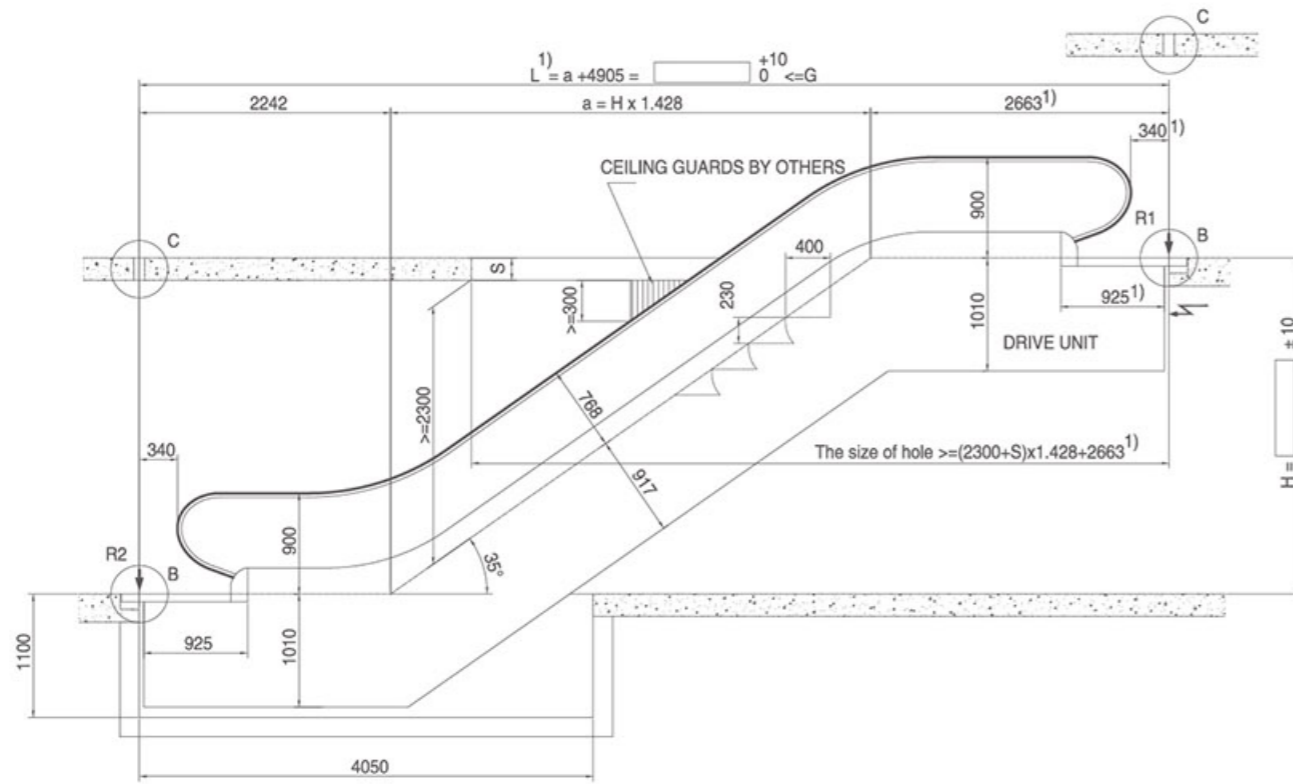
mm size units, individual size may be revised

	Step width		
	1000mm	800mm	600mm
A: Step width	1000	800	600
B: Width between handrails	1157	957	757
C: Handrail center distance	1237	1037	837
D: Width of escalator	1540	1340	1140
E: Width of shaft	1580	1380	1180
F: Minimum spacing	2236	2036	1836
G: Maximum outreach	16000	17200	18900

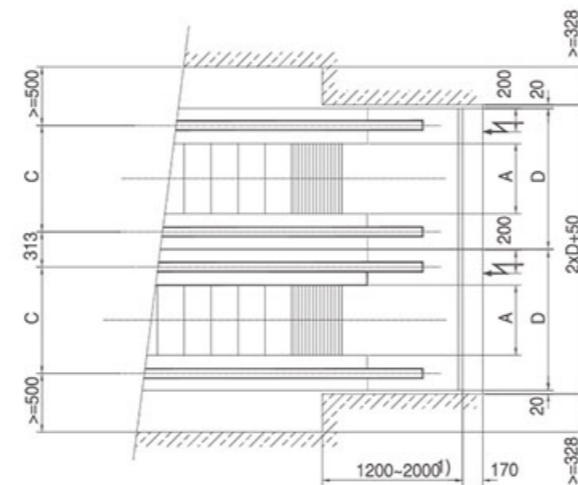
- 1.If L>G, an intermediate support is required, please consult.
- 2.If step width is 600mm, upper truss shall increase 417mm.
- 3.Detailed motor power parameters may check with our technical department.



HS200-35K COMMERCIAL ESCALATOR CONSTRUCTION LAYOUT DRAWING



SINGLE



PARALLEL

Type	Rise H	Weight KN	Support Loads		Power kw V=0.5m/s	Transport size	
			R1 KN	R2 KN		H	I
35-60K 3240 man/hour	3000	53	46	42	5.5	2289	10493
	3500	56	48	44	5.5	2344	11344
	4000	59	51	47	5.5	2388	12197
	4500	62	54	50	5.5	2424	13053
	5000	64	57	52	5.5	2454	13911
35-80K 4800 man/hour	5500	67	60	55	5.5	2480	14770
	6000	70	63	58	5.5	2502	15631
	3000	54	51	47	5.5	2175	10107
	3500	57	54	50	5.5	2218	10960
	4000	60	58	54	5.5	2252	11816
35-100K 6000 man/hour	4500	64	61	57	5.5	2280	12674
	5000	67	65	60	8	2303	13533
	5500	70	68	63	8	2322	14395
	6000	73	71	66	8	2339	15257
	3000	57	58	54	5.5	2175	10107
	3500	60	62	58	8	2218	10960
	4000	64	66	61	8	2252	11816
	4500	67	70	65	8	2280	12674
	5000	70	74	69	11	2303	13533
	5500	74	78	73	11	2322	14395
6000	77	82	76	11	2339	15257	

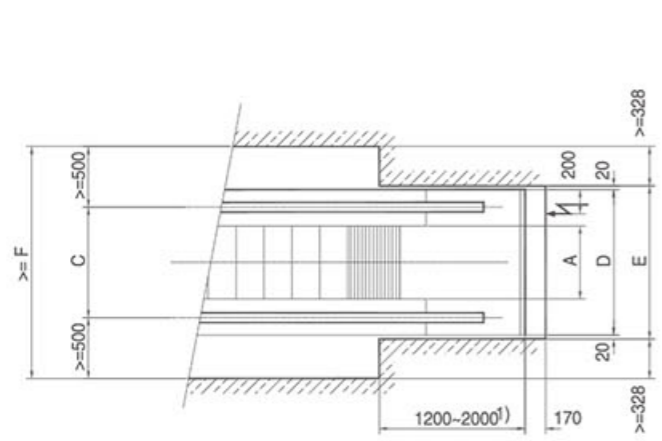
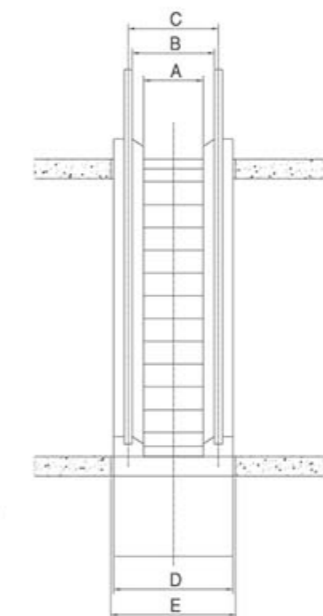
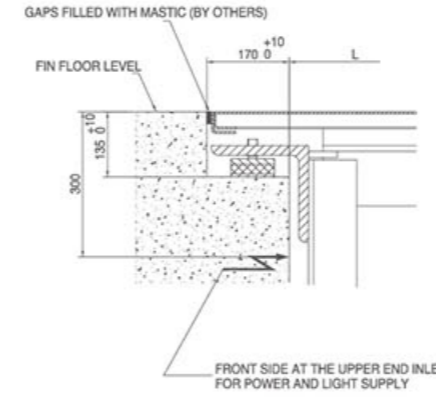
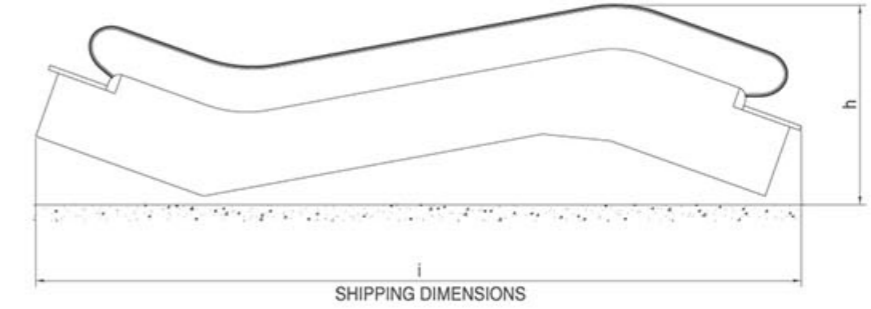
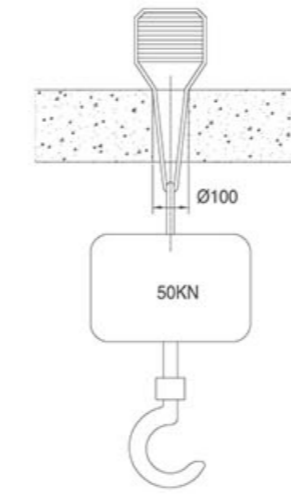
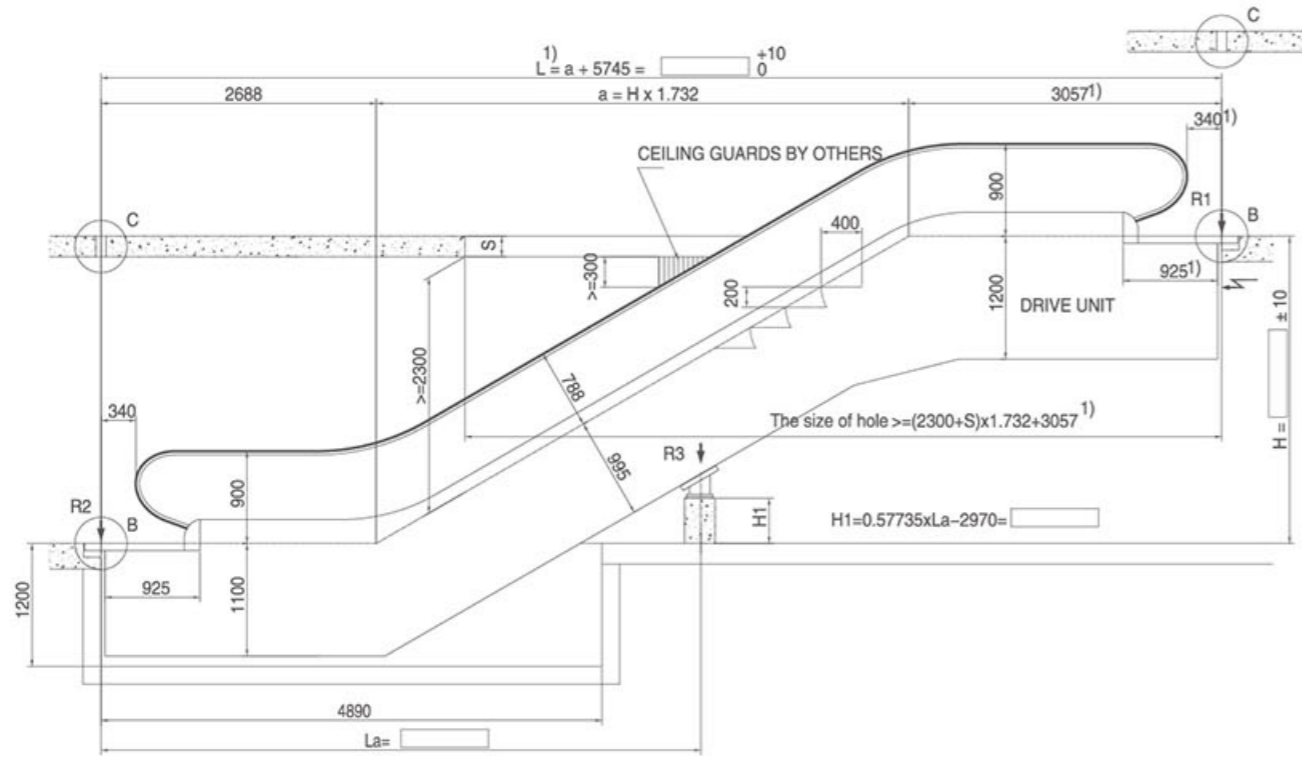
mm size units, individual size may be revise

	Step width		
	1000mm	800mm	600mm
A: Step width	1000	800	600
B: Width between handrails	1157	957	757
C: Handrail center distance	1237	1037	837
D: Width of escalator	1540	1340	1140
E: Width of shaft	1580	1380	1180
F: Minimum spacing	2236	2036	1836
G: Maximum outreach	16000	17200	18900

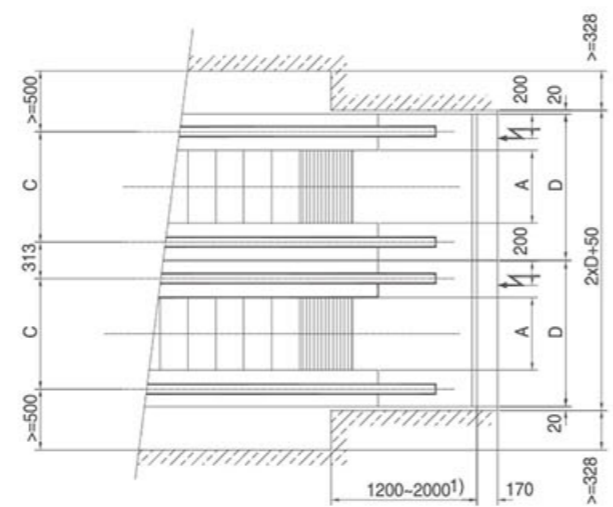
- 1.If L>G, an intermediate support is required, please consult.
- 2.If step width is 600mm, upper truss shall increase 417mm.
- 3.Detailed motor power parameters may check with our technical department.



HS200 MEDIUM HEIGHT COMMERCIAL ESCALATOR CONSTRUCTION LAYOUT DRAWING



SINGLE



PARALLEL

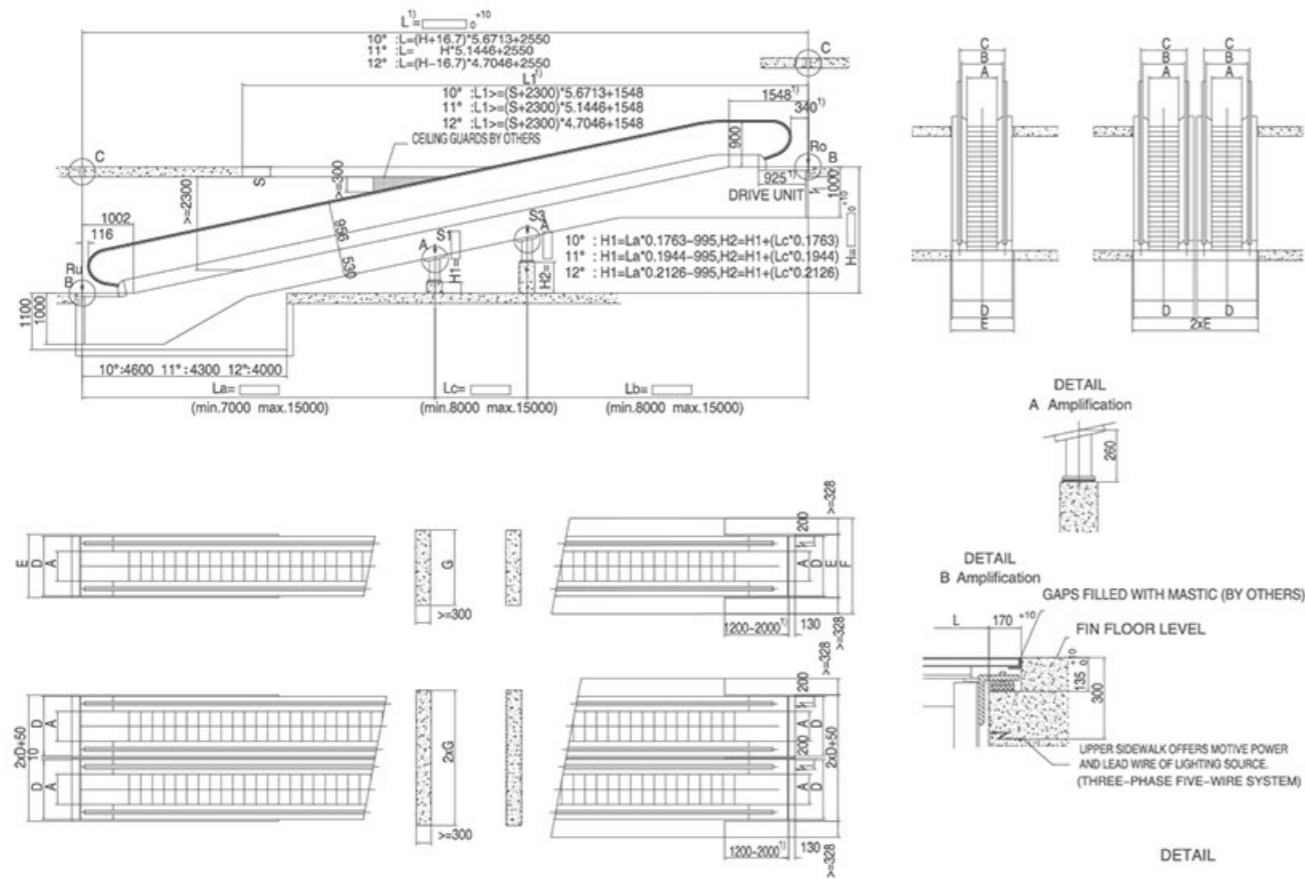
	Step width		
	1000mm	800mm	600mm
A: Step width	1000	800	600
B: Width between handrails	1157	957	757
C: Handrail center distance	1237	1037	837
D: Width of escalator	1540	1340	1140
E: Width of shaft	1580	1380	1180
F: Minimum spacing	2236	2036	1836
G: Maximum outreach	16000	17200	18900

1.If L>G, an intermediate support is required, please consult.
2.If step width is 600mm, upper truss shall increase 417mm.
3.Detailed motor power parameters may check with our technical department.

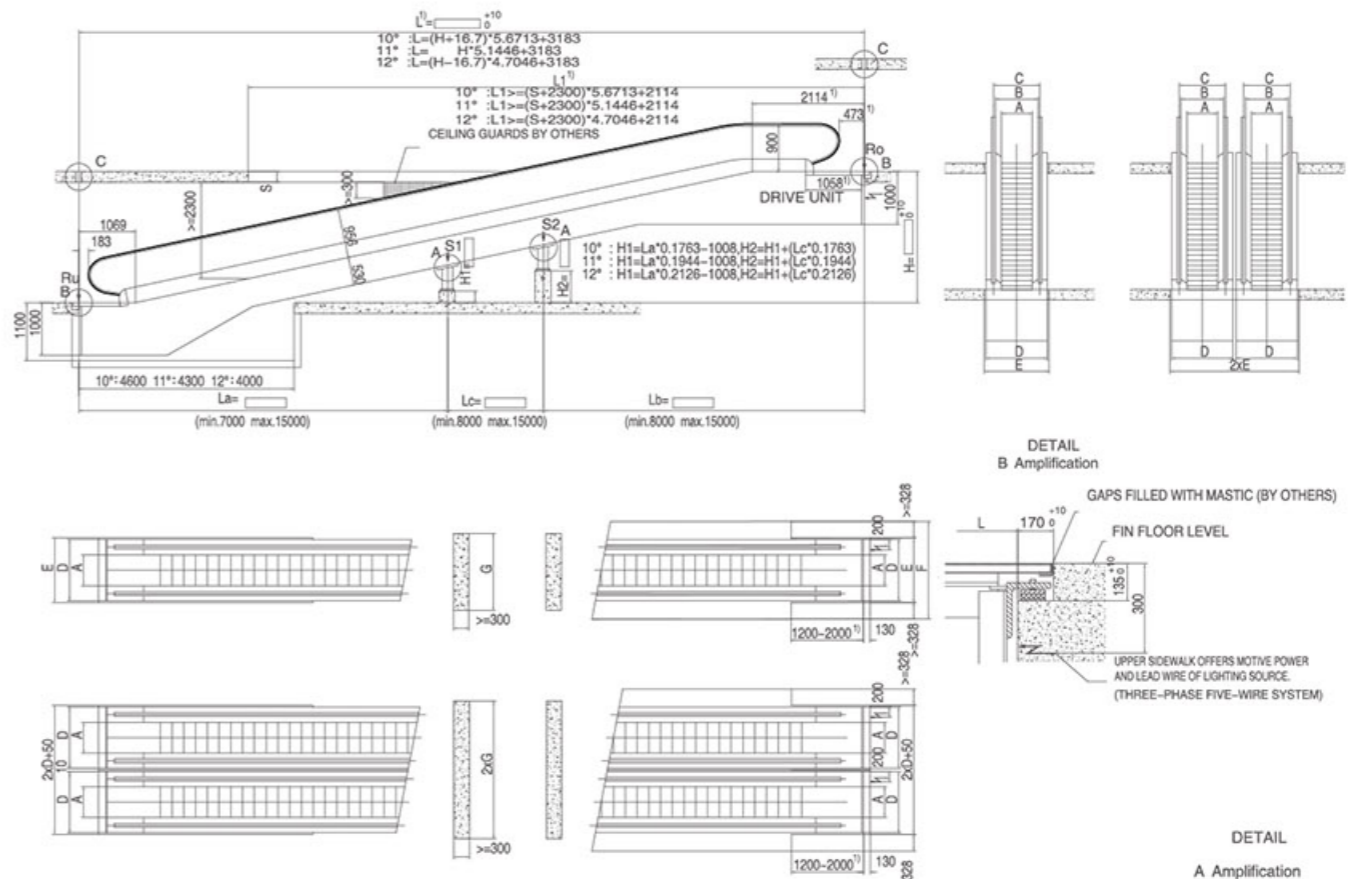
Type	Rise H	Weight KN	Power kw V=0.5m/s
30-60M 3240 man/hour	6000	93	8
	6500	96	
	7000	100	
	7500	103	11
	8000	107	
	8500	110	
	9000	113	
9500	117	15	
10000	120		
11000	127		
12000	134		
30-80M 4800 man/hour	6000	96	11
	6500	100	
	7000	103	
	7500	107	15
	8000	111	
	8500	115	
	9000	118	
9500	122	2x11	
10000	126		
11000	143		
12000	150		
30-100M 6000 man/hour	6000	101	15
	6500	105	
	7000	109	
	7500	113	2x11
	8000	126	
	8500	130	
	9000	134	
9500	138	2x15	
10000	142		
11000	150		
12000	158		

mm size units, individual size may be revise

HS300-I MOVING WALKWAYS CONSTRUCTION LAYOUT DRAWING (10° -12°)



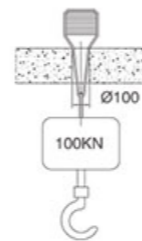
HS300-II MOVING WALKWAYS CONSTRUCTION LAYOUT DRAWING (10° -12°)



Support		
Without mid-support	Single mid-support	Double mid-supports
$R_o = L \cdot q + M$	$R_o = L_b \cdot q + M$ $R_u = L_a \cdot q + N$	$R_o = L_b \cdot q + M$ $R_u = L_a \cdot q + N$
$R_u = L \cdot q + N$	$S_1 = (L_a + L_b) \cdot q \cdot 1.3$	$S_1 = (L_a + L_c) \cdot q \cdot 1.3$ $S_2 = (L_b + L_c) \cdot q \cdot 1.3$

Supported by force	q	M	N
YSS80	0.0039	9.5	4.5
YSS100	0.0045	11	5

	YSS80	YSS100
A	800	1000
B	957	1157
C	1037	1237
D	1340	1540
E	1380	1580
F	2036	2236
G	1300	1500



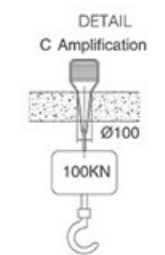
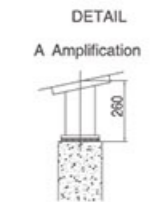
1. Use the tread with 133mm pitch.
2. Upper truss shall increase 417mm for double-drive.
3. Detailed motor power parameters may check with our technical department.

Tilt angle	Rise		Mid-support		La	Lb	Lc
	From	To	S1	S2			
10°	1273	2154	-	-	-	-	-
	2155	3388	1	-	7000	L-7000	-
	3389	4799	1	-	L-15000	15000	-
	4800	6000	1	1	7000	15000	L-22000
11°	1423	2394	-	-	-	-	-
	2395	3754	1	-	7000	L-7000	-
	3755	5309	1	-	L-15000	15000	-
	5310	6000	1	1	7000	15000	L-22000
12°	1572	2634	-	-	-	-	-
	2635	4122	1	-	7000	L-7000	-
	4123	5822	1	-	L-15000	15000	-
	5823	6000	1	1	7000	15000	L-22000

Support		
Without mid-support	Single mid-support	Double mid-supports
$R_o = L \cdot q + M$	$R_o = L_b \cdot q + M$ $R_u = L_a \cdot q + N$	$R_o = L_b \cdot q + M$ $R_u = L_a \cdot q + N$
$R_u = L \cdot q + N$	$S_1 = (L_a + L_b) \cdot q \cdot 1.3$	$S_1 = (L_a + L_c) \cdot q \cdot 1.3$ $S_2 = (L_b + L_c) \cdot q \cdot 1.3$

Supported by force	q	M	N
YSS80	0.0039	9.5	4.5
YSS100	0.0045	11	5

	YSS80	YSS100
A	800	1000
B	957	1157
C	1037	1237
D	1340	1540
E	1380	1580
F	2036	2236
G	1300	1500

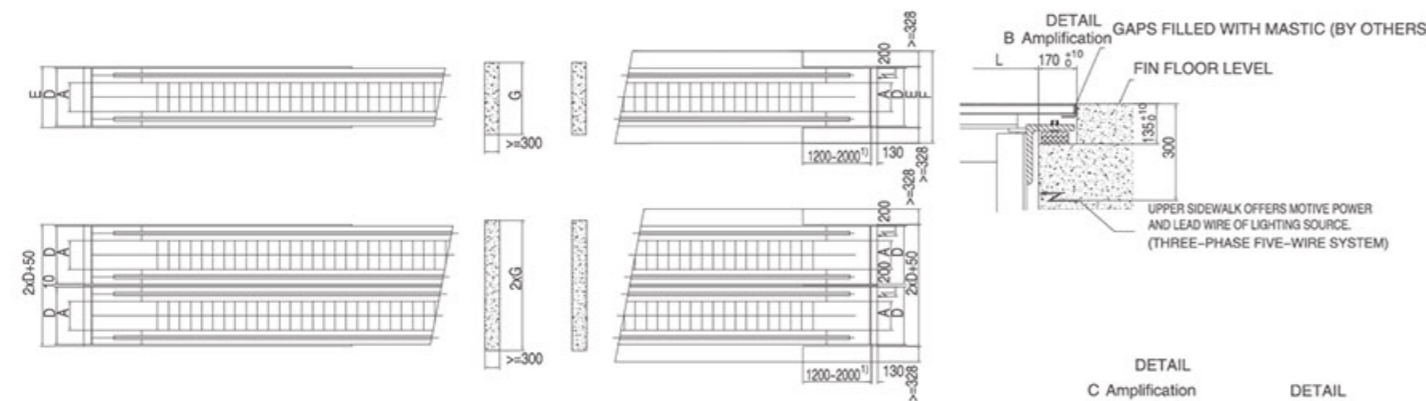
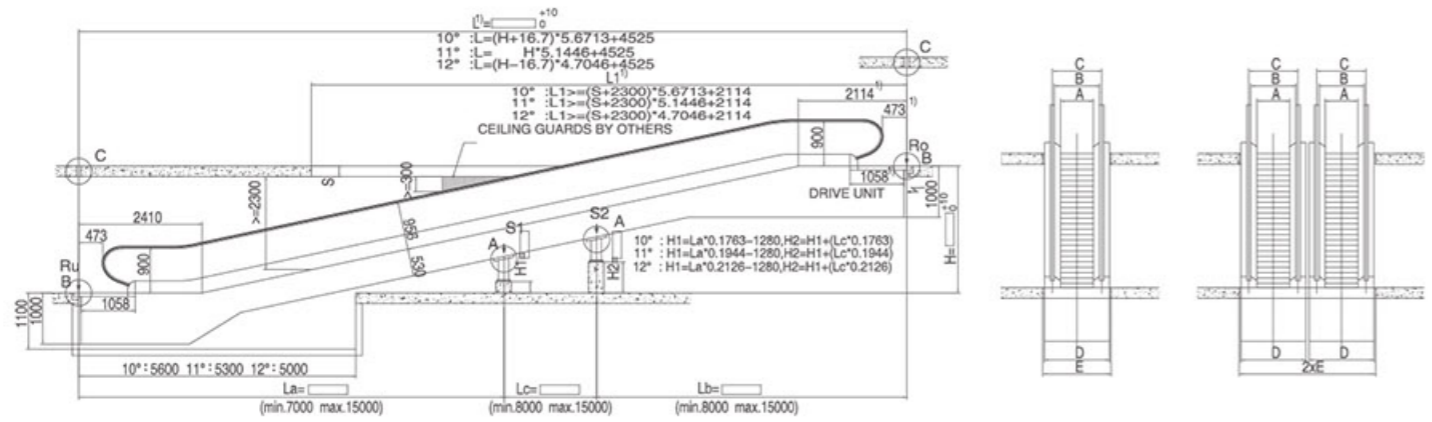


1. Use the tread with 266mm pitch.
2. Upper truss shall increase 417mm for double-drive.
3. Detailed motor power parameters may check with our technical department.

Tilt angle	Rise		Mid-support		La	Lb	Lc
	From	To	S1	S2			
10°	1273	2154	-	-	-	-	-
	2155	3388	1	-	7000	L-7000	-
	3389	4799	1	-	L-15000	15000	-
	4800	6000	1	1	7000	15000	L-22000
11°	1423	2394	-	-	-	-	-
	2395	3754	1	-	7000	L-7000	-
	3755	5309	1	-	L-15000	15000	-
	5310	6000	1	1	7000	15000	L-22000
12°	1572	2634	-	-	-	-	-
	2635	4122	1	-	7000	L-7000	-
	4123	5822	1	-	L-15000	15000	-
	5823	6000	1	1	7000	15000	L-22000



HS300-III DOUBLE-ARC MOVING WALKWAYS CONSTRUCTION LAYOUT DRAWING (10° ~ 12°)



Support		
Without mid-support	Single mid-support	Double mid-supports
$R_o = L \cdot q + M$	$R_o = L_b \cdot q + M$	$R_o = L_b \cdot q + M$
$R_u = L \cdot q + N$	$R_u = L_a \cdot q + N$	$R_u = L_a \cdot q + N$
	$S_1 = (L_a + L_b) \cdot q \cdot 1.3$	$S_1 = (L_a + L_c) \cdot q \cdot 1.3$ $S_2 = (L_b + L_c) \cdot q \cdot 1.3$

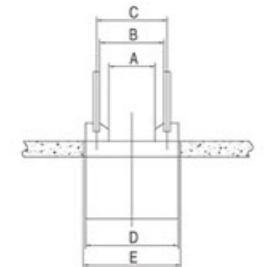
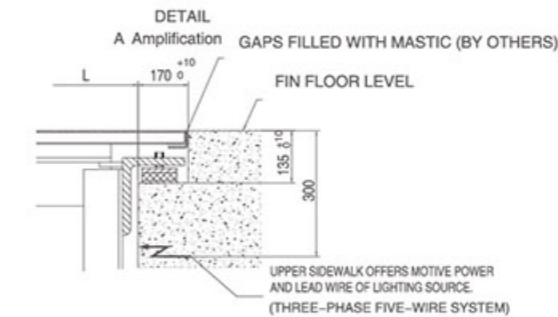
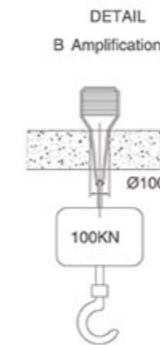
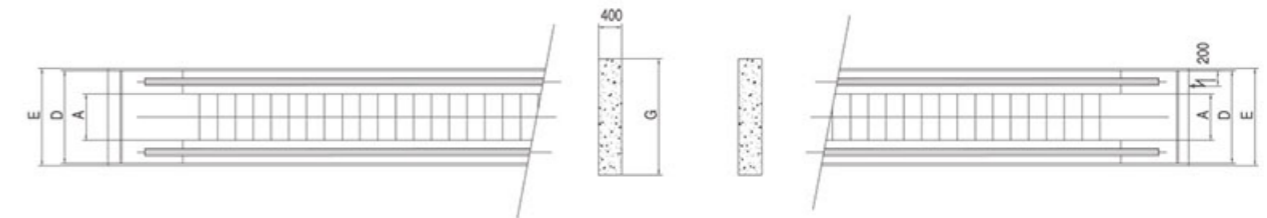
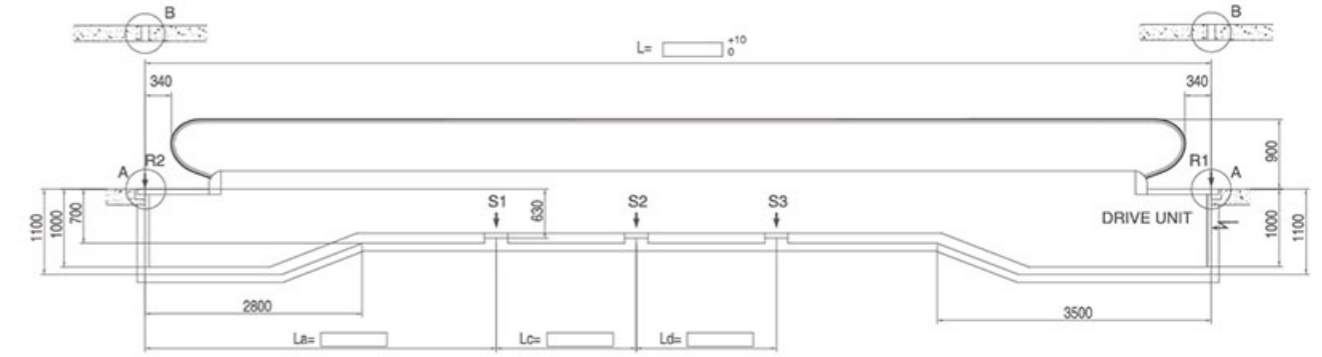
Supported by force	q	M	N
YSS80	0.0039	9.5	4.5
YSS100	0.0045	11	5

	YSS80	YSS100
A	800	1000
B	957	1157
C	1037	1237
D	1340	1540
E	1380	1580
F	2036	2236
G	1300	1500

- Upper truss shall increase 417mm for double-drive.
- Detailed motor power parameters may check with our technical department.

Tilangle	Rise		Mid-support		La	Lb	Lc
	From	To	S1	S2			
10°	1273	2154	-	-	-	-	-
	2155	3388	1	-	7000	L-7000	-
	3389	4799	1	-	L-15000	15000	-
	4800	6000	1	1	7000	15000	L-22000
11°	1423	2394	-	-	-	-	-
	2395	3754	1	-	7000	L-7000	-
	3755	5309	1	-	L-15000	15000	-
	5310	6000	1	1	7000	15000	L-22000
12°	1572	2634	-	-	-	-	-
	2635	4122	1	-	7000	L-7000	-
	4123	5822	1	-	L-15000	15000	-
	5823	6000	1	1	7000	15000	L-22000

HS300 MOVING WALKWAYS CONSTRUCTION LAYOUT DRAWING (0°)



	YSH80	YSH100
A	800	1000
B	957	1157
C	1037	1237
D	1340	1540
E	1380	1580
F	2036	2236
G	1300	1500

CUSTOMER ESTEEMED, SERVICE SUPREME

Comprehensive
Meticulous
Excellent



·TOWARDS establishes the brand institutes in various major cities in China, it will furnish the local clients with the prompt service, including the spare supply and the responsive time.

·TOWARDS sets 24-hours customer hotline in order to urgently remove the trouble, it will always promptly furnish you with the best service.

·TOWARDS regularly assigns the staff to test your escalator's running conditions so that your escalator can get the most professional maintenance.

Attentive

The customers can be rest assured in buying our products.

Considerate

Intensive control, accurate grasp.

Trustworthy

We persist in executing and expanding the service networks.

TOWARDS organizes professional after-sale service team, overall service team has profound experience to solve after-sale service problems and formulate solutions. The service engineers in TOWARDS should be taken professional, strict and standard train, and pass the examination before assignment.

